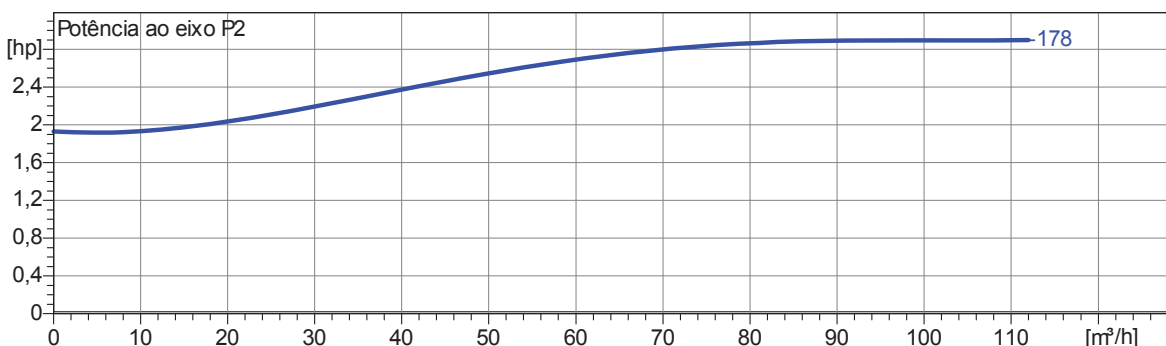
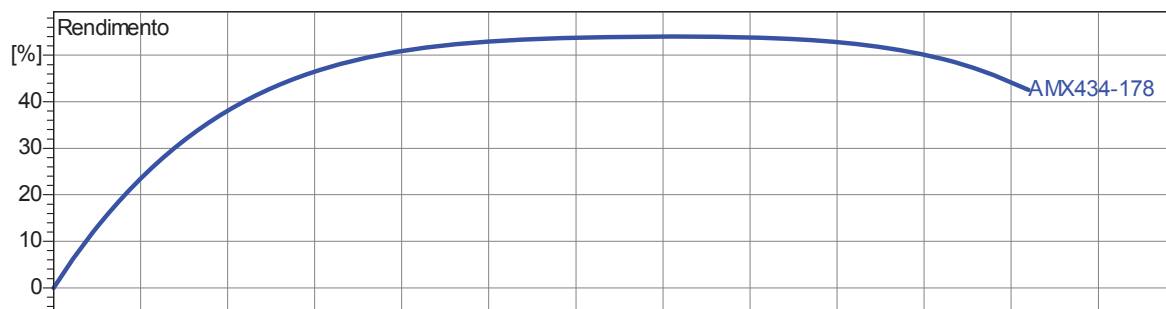


| Impulsor | | | | | |
|--|---------------------------------|--|---------------------|---|--|
| Tipo do impulsor: Turbina monocanal | Passagem de sólidos Ø: 80 mm | Max. Ø: 206 mm | Min. Ø: 178 mm | Sel. Ø: 178 mm | |
| Dados de funcionamento | | | | | |
| Velocidade: 1750 rpm | Frequencia: 60 Hz | Ponto de funcionamento Q = 0 m³/h H = 0 m | Potência de eixo P2 | Diâmetro de descarga : 4" (100mm) | |

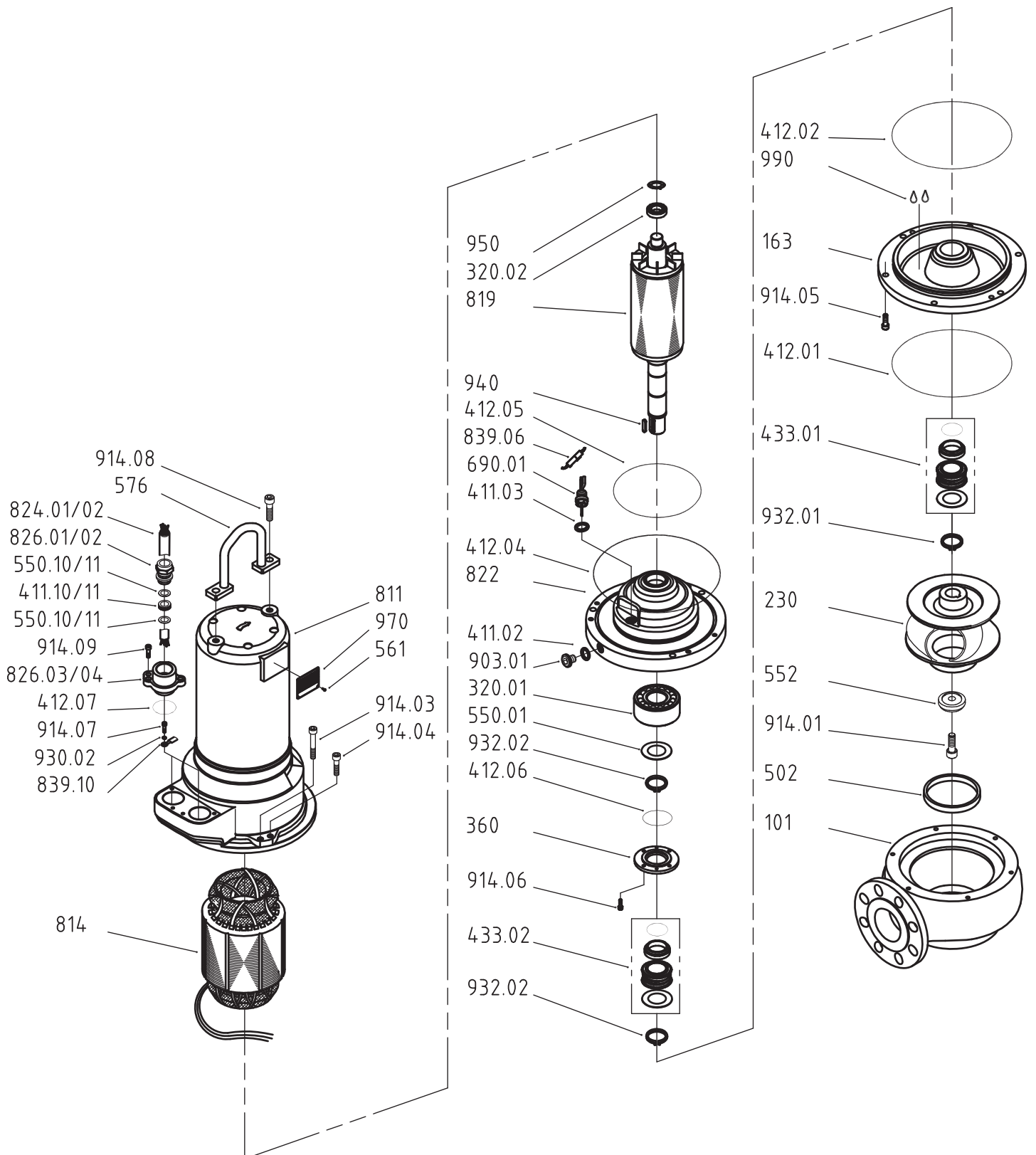
Caraterísticas da potencia referidas a :
Água limpa [100%] ; 20°C; 998,3kg/m³; 1,005mm²/s

Norma do teste: **P2>10kW, ISO9906 Grade 2B**
P2<10kW, ISO9906 Sect. 4.4.2



2.0.1 - 01.02.2013 (Build 59)

| | | | | |
|----------|--------------|------------|-----------|------------------|
| Projecto | Projecto nº: | Criado por | Página: 1 | Data: 2013-05-20 |
|----------|--------------|------------|-----------|------------------|



Spare part list no. 95171111.01
SUBMERSIBLE SEWAGE PUMP 60 HZ
 Type AMX434-178/2,9T/C 230/380V/3 DOL
 Drawing no. 015136/035136
 Connection diagr. no. SD10-A0-1010-00A

| Draw.pos. | Qty | Unit | Description | Part no. |
|-----------|------|------|--|----------|
| 101 | 1.00 | ST | PUMP HOUSING 101 M1019 GG M(X)23(28-41)-N... WITHOUT FEET | 6501761 |
| 163 | 1.00 | ST | PRESSURE COVER 163 M1329 GG AM173.T(L)/AM204.P(L) | 6231421 |
| 230 | 1.00 | ST | IMPELLER 230 (HOLE 30) M1258-2 GG MX13/2336-...(D=178) | 6312731 |
| 320.01 | 1.00 | ST | ANGULAR BALL BEARING 3207 B.TVH.C3 | 3232073 |
| 320.02 | 1.00 | ST | GROOVED BALL BEARING 6305-2ZN1/C3WT | 3163054 |
| 360 | 1.00 | ST | BEARING COVER 360 M1319 AL AM171/AM172 | 6220860 |
| 411.02 | 2.00 | ST | FIBER JOINT 13,0 X 20,0 X 2,0 | 4281218 |
| 411.03 | 1.00 | ST | FIBER JOINT 16,5 X 22,0 X 2,0 MM | 4281622 |
| 411.10 | 1.00 | ST | SEALING RING 19 X 29,5 X 18 | 7362076 |
| 412.01 | 1.00 | ST | O-RING, NBR CA 70 SHORE 220 X 4 | 3522040 |
| 412.02 | 1.00 | ST | O-RING, NBR CA 70 SHORE 220 X 4 | 3522040 |
| 412.04 | 1.00 | ST | O-RING, NBR CA 70 SHORE 240 X 4 | 3524040 |
| 412.05 | 1.00 | ST | O-RING, NBR CA 70 SHORE 160 X 4 | 3516040 |
| 412.06 | 1.00 | ST | O-RING, NBR CA 70 SHORE 70 X 3 | 3507030 |
| 412.07 | 2.00 | ST | O-RING, NBR CA 70 SHORE 46 X 3 | 3504630 |
| 433.01 | 1.00 | ST | MECHANICAL SEAL - HARD METAL MG1/35-G64-E1 Q1Q1PGG INCL.1 FITTING WASHER | 3738351 |
| 433.02 | 1.00 | ST | MECHANICAL SEAL - HARD METAL MG1/35-G64-E1 Q1Q1PGG INCL.1 FITTING WASHER | 3738351 |
| 502 | 1.00 | ST | WEAR RING 502 BZ 110,8 X 120 X 15 | 7343612 |
| 550.01 | 1.00 | ST | SUPPORTING DISK DIN 988 35 X 45 X 2,5 | 4245352 |
| 550.10 | 2.00 | ST | PRESSURE RING 19 x 30 x 2,5 | 1318219 |

Spare part list no. 95171111.01
Submersible Sewage Pump 60 Hz
Type AMX434-178/2,9T/C 230/380V/3 DOL
Drawing no. 015136/035136
Connection diag. no. SD10-A0-1010-00A

| Draw.pos. | Qty | Unit | Description | Part no. |
|-----------|------|------|---|----------|
| 552 | 1.00 | ST | CLAMPING DISK 552 A2 AM170 (PIV.30,M10) | 7341822 |
| 561 | 4.00 | ST | GROOVED DRIVE STUD 2 X 5 DIN 1476 1.4303 | 4414825 |
| 576 | 1.00 | ST | HANDLE 576 AM173...T(U) (180X130) A2 | 7200865 |
| 690.01 | 1.00 | ST | SEAL PROBE M16X1,5-80 | 1585205 |
| 811 | 1.00 | ST | MOTOR HOUSING 811 M1090-1 GG AM173.T (2*D45) | 6403601 |
| 814 | 1.00 | ST | STATOR WITH WINDING TM DT170/103X60 4POL. 230/380V-60HZ | 1808221 |
| 819 | 1.00 | ST | MOTOR SHAFT WITH ROTOR 819 AM173../4 (WL394,RO103/60,ZL40) | 71033351 |
| 822 | 1.00 | ST | LOWER BEARING COVER M1315-A GG AM173 T/C | 6223021 |
| 824.01 | 1.00 | ST | RUBBER-SHEATHED CABLE H07RNF-PLUS 10 G 1,5 10,4M LONG | 1041588 |
| 826.02 | 1.00 | ST | CABLE SCREWING W. PULL RELIEF M 32 x 1,5 | 1317032 |
| 826.03 | 1.00 | ST | CABLE INLET FLANGE M1410 GG M32X1,5/D45 | 7350981 |
| 826.04 | 1.00 | ST | LOCKING FLANGE M1499 GG AM170RW-240RW/AM173 | 7350851 |
| 839.06 | 1.00 | ST | PLUG SET 2 POLE MINI | 1610075 |
| 839.06 | 2.00 | ST | PLUG SET 2 POLE MINI | 1610077 |
| 839.10 | 1.00 | ST | CABLE SOCKET, ISOL. 6,5 MM "RING-SHAPED" A 2565 R | 1211107 |
| 903.01 | 2.00 | ST | HEXAGON SOCKET SCREW PLUG M 12 X 1,5/DIN 908-5.8 1.4305 | 4090807 |
| 914.02 | 1.00 | ST | CYLINDER SCREW DIN 912 A2 M 10 X 25 | 4010252 |
| 914.03 | 3.00 | ST | CYLINDER SCREW DIN 912 A2 M 10 X 85 | 4010852 |
| 914.04 | 3.00 | ST | CYLINDER SCREW DIN 912 A2 M 10 X 45 | 4010452 |
| 914.05 | 2.00 | ST | CYLINDER SCREW DIN 912 A2 M 8 X 25 | 4008252 |
| 914.06 | 4.00 | ST | CYLINDER SCREW DIN 912-8.8 VZ M 6 X 20 | 4006201 |
| 914.07 | 1.00 | ST | CYLINDER SREW DIN 912-8.8 VZ M 6 X 8 | 4006120 |

Spare part list no. 95171111.01
Submersible Sewage Pump 60 Hz
Type AMX434-178/2,9T/C 230/380V/3 DOL
Drawing no. 015136/035136
Connection diag. no. SD10-A0-1010-00A

| Draw.pos. | Qty | Unit | Description | Part no. |
|-----------|------|------|--|----------|
| 914.08 | 2.00 | ST | CYLINDER SCREW DIN 912 A2 M 12 X 30 | 4012302 |
| 914.09 | 4.00 | ST | CYLINDER SCREW DIN 912 A2 M 6 X 20 | 4006202 |
| 930.02 | 1.00 | ST | TOOTH WASHER DIN 6797-ST.VZ A 6,4 (FOR M 6) | 4279706 |
| 932.01 | 1.00 | ST | CIRCLIP DIN 471 A 35 X 1,5 | 4347134 |
| 932.02 | 2.00 | ST | CIRCLIP DIN 471 A 35 X 1,5 | 4347135 |
| 940 | 1.00 | ST | FITTING KEY DIN 6885 - C45K 8 X 7 X 32 | 4480732 |
| 950 | 1.00 | ST | SPRING WASHER AM173...T D62/27 | 7342945 |
| 970 | 1.00 | ST | PUMP LABEL 65 X 53 X 0,7 | 7365494 |
| 990 | 1.90 | L | MOTOR OIL HOMA-ATOX | 4619120 |