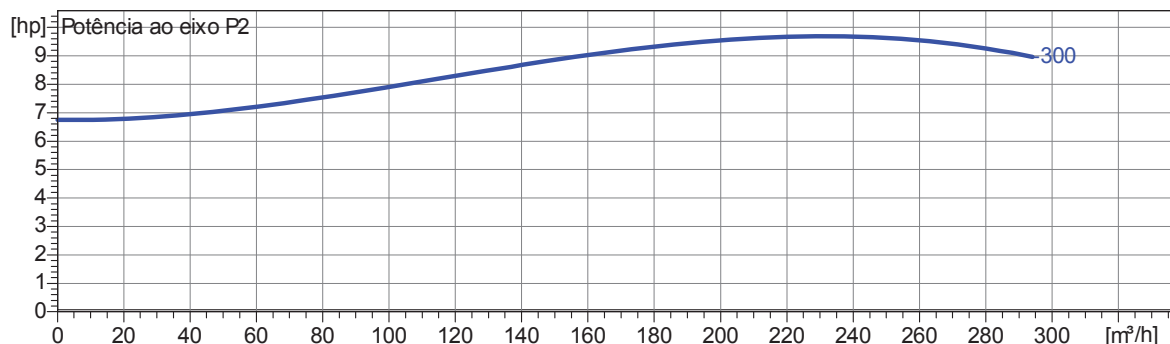
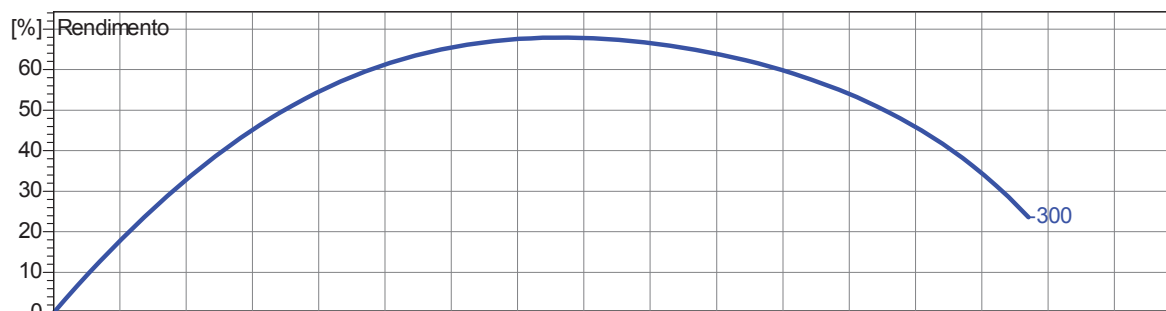


| Impulsor | | | | | |
|--|----------------------------------|--|---------------------|---|--|
| Tipo do impulsor: Turbina monocanal | Passagem de sólidos Ø: 100 mm | Max. Ø: 313 mm | Min. Ø: 263 mm | Sel. Ø: 298 mm | |
| Dados de funcionamento | | | | | |
| Velocidade: 1160 rpm | Frequencia: 60 Hz | Ponto de funcionamento Q = 0 m³/h H = 0 m | Potência de eixo P2 | Diâmetro de descarga : 6" (150mm) | |

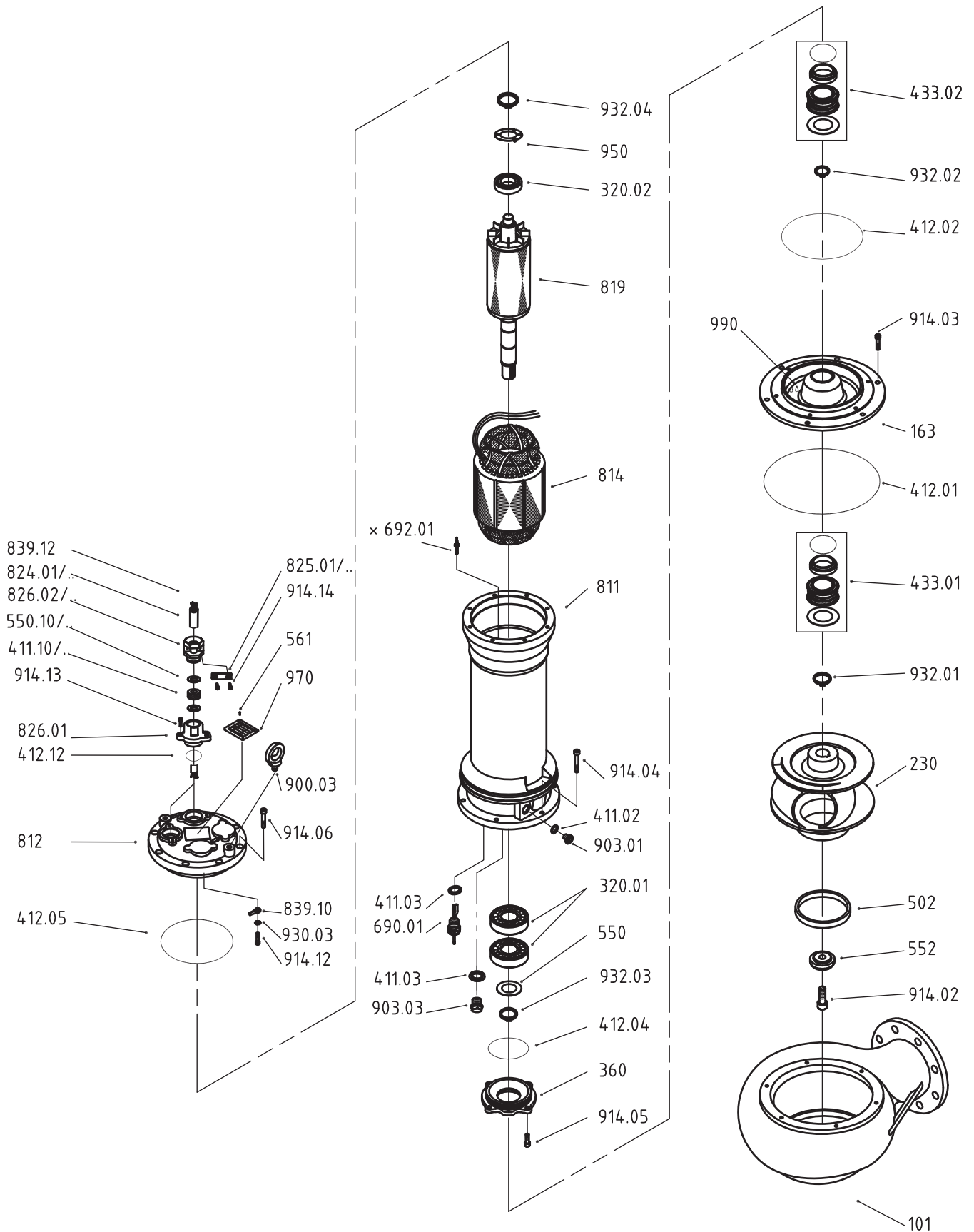
Caraterísticas da potencia referidas a :
Água [100%] ; 20°C; 998,3kg/m³; 1,005mm²/s

Norma do teste: **P2>10kW, ISO9906 Grade 2B**
P2<10kW, ISO9906 Sect. 4.4.2



2.0.1 - 01.02.2013 (Build 59)

| | | | | |
|----------|--------------|------------|---------------------|---------------------------|
| Projecto | Projecto nº: | Criado por | Página: 1 | Data 2013-05-20 |
|----------|--------------|------------|---------------------|---------------------------|



× optional

Spare part list no. 95180641.02
SUBMERSIBLE SEWAGE PUMP 60 HZ
 Type AMX646-300/9,8P/C 230V/3 ST/D
 Drawing no. 015644/035644
 Connection diagr. no. SY01-A0-1010-00

| Draw.pos. | Qty | Unit | Description | Part no. |
|-----------|------|------|----------------------------------|----------|
| 101 | 1.00 | ST | PUMP HOUSING 101 | 6503301 |
| | | | M1072 GG MX34(48-62)-P... | |
| 163 | 1.00 | ST | PRESSURE COVER 163 | 6231441 |
| | | | M1330 GG AM204-P(L)...-2 | |
| 230 | 1.00 | ST | IMPELLER 230 | 6311111 |
| | | | M1064-1 GG MX2460-P... | |
| 320.01 | 2.00 | ST | ANGULAR BALL BEARING | 3273101 |
| | | | 7310 BECBJ/WTVT 300 | |
| 320.02 | 1.00 | ST | GROOVED BALL BEARING | 3163087 |
| | | | 6308-2ZN1.C4/WT | |
| 360 | 1.00 | ST | BEARING COVER 360 | 6223401 |
| | | | M1763 GG AM204...P (MG1/45..) | |
| 411.02 | 2.00 | ST | SEALING RING | 4282024 |
| | | | 20,5 X 27,0 X 2,0 MM (POLYAMID) | |
| 411.03 | 2.00 | ST | FIBER JOINT | 4281622 |
| | | | 16,5 X 22,0 X 2,0 MM | |
| 411.15 | 1.00 | ST | SEALING WASH NBR 65%/-5° SHORE A | 7362116 |
| | | | M 36 X 1,5 15X33,5X15MM | |
| 411.17 | 1.00 | ST | SEALING WASHER NBR 65%/-5° | 7362126 |
| | | | M 36 X 1,5 17X33,5X15MM | |
| 412.01 | 1.00 | ST | O-RING, NBR CA 70 SHORE | 3528040 |
| | | | 280 X 4 | |
| 412.02 | 1.00 | ST | O-RING, NBR CA 70 SHORE | 3522040 |
| | | | 220 X 4 | |
| 412.04 | 1.00 | ST | O-RING, NBR CA 70 SHORE | 3510030 |
| | | | 100 X 3 | |
| 412.05 | 1.00 | ST | O-RING, NBR CA 70 SHORE | 3520040 |
| | | | 200 X 4 | |
| 412.12 | 2.00 | ST | O-RING, NBR CA 70 SHORE | 3504630 |
| | | | 46 X 3 | |
| 433.01 | 1.00 | ST | MECHANICAL SEAL - HARD METAL | 3738451 |
| | | | MG1/45-G6-E3 Q1Q1PGG | |
| | | | INCL.1 FITTING WASHER | |
| 433.02 | 1.00 | ST | MECHANICAL SEAL - HARD METAL | 3738451 |
| | | | MG1/45-G6-E3 Q1Q1PGG | |
| | | | INCL.1 FITTING WASHER | |
| 502 | 1.00 | ST | WEAR RING 502 | 7343602 |
| | | | BZ 155 X 140,6 X 15 | |
| 550 | 1.00 | ST | SUPPORTING DISK DIN 988 | 4262503 |
| | | | 50 X 62 X 3 | |
| 550.15 | 2.00 | ST | PRESSURE RING | 7342335 |
| | | | M 36 X 1,5 15X34X2,5MM | |
| 550.17 | 2.00 | ST | PRESSURE RING | 7342345 |
| | | | M 36 X 1,5 17X34X2,5MM | |

Spare part list no. 95180641.02
SUBMERSIBLE SEWAGE PUMP 60 HZ
 Type AMX646-300/9,8P/C 230V/3 ST/D
 Drawing no. 015644/035644
 Connection diagr. no. SY01-A0-1010-00

| Draw.pos. | Qty | Unit | Description | Part no. |
|-----------|-------|------|---|----------|
| 552 | 1.00 | ST | CLAMPING DISK 552 M/V(X)24-34-P... M16-D49 | 7341875 |
| 561 | 4.00 | ST | GROOVED DRIVE STUD 2 X 5 DIN 1476 1.4303 | 4414825 |
| 690.01 | 1.00 | ST | SEAL PROBE M16X1,5-800 | 1585225 |
| 811 | 1.00 | ST | MOTOR HOUSING 811 M1060A-2 GG AM204 P/C(S) 490LG | 6408221 |
| 812 | 1.00 | ST | MOTOR HOUSING COVER 812 M1063 GG AM204.P (2*D45) | 6204111 |
| 814 | 1.00 | ST | STATOR WITH WINDING DT200/135X150 6POL. 230/380V-60HZ WITH THERMAL SENSOR | 1810079C |
| 819 | 1.00 | ST | MOTOR SHAFT WITH ROTOR 819 P(U) 76/40 (WL531,RO135/150,ZD40) | 7106026 |
| 824.05 | 10.60 | M | RUBBER-SHEATHED CABLE H07RN-F 5 G 1,5 | 1041551 |
| 824.07 | 10.60 | M | RUBBER-SHEATHED CABLE H07RN-F 7 G 1,5 OZOFLEX (PLUS) | 1041873 |
| 825.05 | 1.00 | ST | GRIPPER CLAMP M1515-2 GGG 40 13-15 F.M1515 (P) | 7353011 |
| 825.07 | 1.00 | ST | CLAMP M1515-3 GGG 40 15-17 F.M1515 (P) | 7353021 |
| 826.01 | 1.00 | ST | CABLE INLET FLANGE M1410 GG M36X1,5/D45 | 7350961 |
| 826.01 | 1.00 | ST | CABLE INLET FLANGE M1410 GG M36X1,5/D45 | 7350961 |
| 826.05 | 1.00 | ST | CABLE ENTRY SOCKET M1515 GGG M36X1,5 D13-15 SW46 | 7353311 |
| 826.07 | 1.00 | ST | CABLE ENTRY SOCKET M1515 GGG M36X1,5 D15-17 SW46 | 7353321 |
| 839.10 | 2.00 | ST | CABLE SOCKET, ISOL. 6,5 MM "RING-SHAPED" A 2565 R | 1211107 |
| 839.12 | 7.00 | ST | CORD END PIECE, BRASS-BLANK 1,0-2,5 QMM | 1201025 |
| 839.12 | 9.00 | ST | CORD END PIECE, BRASS-BLANK 1,0-2,5 QMM | 1201025 |
| 900.03 | 2.00 | ST | EYE BOLT DIN 580 BLACK M 12 | 4058012 |
| 903.01 | 2.00 | ST | HEXAGON SOCKET SCREW PLUG M 20 X 1,5/DIN 908-5.8 1.4305 | 4090822 |
| 903.03 | 1.00 | ST | LOCK SCREW 1.4305 M 16 X 1,5 DI=10 DÜ(EX) | 4090934 |

Spare part list no. 95180641.02
SUBMERSIBLE SEWAGE PUMP 60 HZ
Type AMX646-300/9,8P/C 230V/3 ST/D
Drawing no. 015644/035644
Connection diag. no. SY01-A0-1010-00

| Draw.pos. | Qty | Unit | Description | Part no. |
|-----------|------|------|--|----------|
| 914.02 | 1.00 | ST | CYLINDER SCREW DIN 912 A2 M 16 X 40 | 4016402 |
| 914.03 | 6.00 | ST | CYLINDER SCREW DIN 912 A2 M 10 X 25 | 4010252 |
| 914.04 | 6.00 | ST | CYLINDER SCREW DIN 912 A2 M 10 X 40 | 4010402 |
| 914.05 | 4.00 | ST | CYLINDER SCREW DIN 912-8.8 VZ M 8 X 25 | 4008251 |
| 914.06 | 8.00 | ST | CYLINDER SCREW DIN 912 A2 M 10 X 30 | 4010302 |
| 914.12 | 1.00 | ST | CYLINDER SCREW DIN 912-8.8 VZ M 6 X 10 | 4006101 |
| 914.13 | 4.00 | ST | CYLINDER SCREW DIN 912 A2 M 6 X 20 | 4006202 |
| 914.14 | 2.00 | ST | CYLINDER SCREW DIN 912-8.8 A2 M 5 X 20 | 4005205 |
| 914.14 | 2.00 | ST | CYLINDER SCREW DIN 912-8.8 A2 M 5 X 20 | 4005205 |
| 930.03 | 1.00 | ST | TOOTH WASHER DIN 6797-ST.VZ A 6,4 (FOR M 6) | 4279706 |
| 932.01 | 1.00 | ST | CIRCLIP DIN 471 1.4122 A 45 X 1,75 | 4347146 |
| 932.02 | 1.00 | ST | CIRCLIP DIN 471 A 45 X 1,75 | 4347145 |
| 932.03 | 1.00 | ST | CIRCLIP DIN 471 A 50 X 2 | 4347150 |
| 932.04 | 1.00 | ST | CIRCLIP DIN 471 A 40 X 1,75 | 4347140 |
| 940 | 1.00 | ST | FITTING KEY DIN 6885 - C45K 12 X 8 X 40 | 4481240 |
| 950 | 1.00 | ST | SPRING WASHER AM204...P, AM243...F D90/54 | 7342925 |
| 970 | 1.00 | ST | PUMP LABEL 65 X 53 X 0,7 | 7365494 |
| 990 | 3.00 | L | MOTOR OIL HOMA-ATOX | 4619120 |